



---

## SERVICE OF WORSHIP

November 13, 2016 • 8, 9:30 and 11 a.m.

### ABOUT TODAY'S SERVICE

God's beloved world is beautiful. It is also broken. The world is filled with suffering. We sometimes live as if suffering is an aberration to the norm in life, but suffering is not an aberration. No one escapes suffering. Jesus himself knew deep suffering. Given that we can't change this reality of human living, how do we as people of faith engage the brokenness of the world?

## GOD'S PEOPLE GATHER

Prelude

*Partita in A minor, Movement II, Corrente*  
music: J.S. Bach; Joelle Teal, flute

Introit

*Psalm 100*  
words and music: Dennis and Nan Allen; K-2 Morning Stars; Rebecca Enslow, director

Call to Worship

Rev. Hallie Hottle

*adapted from a prayer by Howard Thurman*

Lord, open unto us...

**Open unto us — light for our darkness,  
courage for our fear,  
hope for our despair.**

**Open unto us — peace for our turmoil,  
joy for our sorrow,  
strength for our weakness.**

**Open unto us — wisdom for our confusion,  
love for our hates,  
beauty for our brokenness.**

**Open unto us — Yourself, for ourselves.**

Lord, open unto us...

\*Hymn, No. 32

*I Sing the Mighty Power of God*  
ELLACOMBE

\*Prayer of Confession

**God of mercy,  
Forgive the fear that keeps us from being good neighbors.  
Forgive the selfishness that holds us back from generous living.  
Forgive the pride that hinders our ability to trust.  
Forgive the doubt that limits our delight in your goodness.  
Forgive the shame that stifles the song in our heart.  
Speak the word, and we will be a new creation.  
Say the word of grace, and we will live to your glory.** (Silent prayer)

\*Assurance of God's Grace

\*Response

Glo - ry to God, glo - ry to God, glo - ry in the high - est!

Glo - ry to God, glo - ry to God, al - le - lu - ia, al - le - lu - ia!

\*Passing of the Peace

Words of Welcome

Welcome of New Members (11 a.m.)

## PROCLAMATION OF THE WORD

Call to Prayer

God, be the love to search and keep me; God, be the prayer to move my voice;

God, be the strength to now up-hold me: O Christ, sur-round me; O Christ, sur-round me.

Prayers of the People and the Lord's Prayer

**Our Father, who art in heaven, hallowed be thy name.**

**Thy kingdom come, thy will be done, on earth as it is in heaven.**

**Give us this day our daily bread;**

**and forgive us our debts, as we forgive our debtors;**

**and lead us not into temptation, but deliver us from evil.**

**For thine is the kingdom and the power and the glory, forever. Amen.**

Anthem

*Prayer for Today*

music: Margaret Tucker; Village Choir; Joelle Teal, flute

Prayer for Illumination

Dee Couch (8 a.m.); Larry Sneegas (9:30 a.m.)

Scripture Reading

Matthew 5:1-12 (pg. 880)

Sermon

*Blessed are Those who Mourn*

Rev. Tom Are, Jr. (8, 9:30 a.m.)

Dr. Rodger Nishioka (11 a.m.)

## RESPONSE TO THE WORD

\*Hymn, No. 172 (st. 1,2,5)

*Blest Are They*  
BLEST ARE THEY

Offertory

*Partita in A minor, Movement III, Sarabande*  
music: J.S. Bach; Joelle Teal, flute (8 a.m.)

*Gloria*  
music: Franz Joseph Haydn; Village Brass (9:30, 11 a.m.)

\*Response

**For thyself, best gift divine, to the world so freely given;**

**For that great, great love of thine, peace on earth and joy in heaven:**

**Lord of all, to thee we raise this our hymn of grateful praise.**

\*Prayer of Dedication

**Generous God, we give you our thanks indeed.  
All that we have, comes from you.  
All the love we know, comes from you.  
Take the gifts we offer back to you now  
and use them for your holy work in this beautiful but broken world.  
We are creatures of your own making,  
and you have entrusted us with sacred responsibility.  
So make us instruments of your peace,  
witnesses of your presence,  
and reminders of your grace.  
We ask this in the name of your son, Jesus Christ, who redeems us all. Amen.**

\*Hymn, No. 792

*There Is a Balm in Gilead*  
BALM IN GILEAD

\*Benediction

\*Response

Village Choir

\*Postlude

*Concerto for Flute in C*  
by Wolfgang Amadeus Mozart; Joelle Teal, flute (8 a.m.)  
*All Creatures of Our God and King*  
arr. Gordon Schuster; Village Brass (9:30, 11 a.m.)

*\*All who are able may stand*

© A-705103 for all hymns

## THE CHURCH'S BOOK (Week of November 14, 2016)

The following daily Bible readings were written by Rev. Tom Are, Jr. and are an offering for your own personal devotion. You are invited to read the text, think about the reflection and questions and allow these to lead you in a time of prayer. Pray for your own journey of faith. Pray for Village Church and our mission. Pray for God's world.

### **Monday, Nov. 14**

**Luke 14:15-24**

The parable ends harshly... "none of those invited will taste my dinner." The truth of this parable is that some moments come and once they pass we cannot get them back. Consider today as an invitation from God: how will you respond to the gift of this day? We will not have this day again.

### **Tuesday, Nov. 15**

**Psalm 19**

The heavens are telling! The Psalm begins by praising God for the beauty of creation. The changing seasons is a glorious reminder of God's creativity. Then the Psalm turns to scripture: "The law of the Lord is perfect, reviving the soul." We need more than nature to know God. Scripture speaks of God's involvement in the human story. What is your favorite scripture text? Does it "revive the soul?"

### **Wednesday, Nov. 16**

**Luke 15:1-10**

Which one of you? The answer is "none of us." Leaving 99 to search for one lost sheep is extravagant behavior. We would cut our losses, but God doesn't. God's love cannot let go of us. God calls us by name. Read this again as a story of God's love for you.

### **Thursday, Nov. 17**

**Luke 17:11-19**

Jesus healed ten lepers. One returns in gratitude. Healing is a great gift. We might think that all ten would be grateful. Maybe if Jesus had been able to give them the time they lost or if Jesus could have paid them lost wages, maybe then they would be grateful. But Jesus didn't do that. He just gave them the day like everyone else. What does it take to make you grateful?

### **Friday, Nov. 18**

**James 1:1-15**

Temptation is not the dessert tray or some such thing. The temptation Christians face is to forget that we are Christians. When trouble comes, when disappointment comes, when testing comes (and it always comes), remembering that we are loved by God and called by God makes all the difference.

### **Saturday, Nov. 19**

**Psalm 139**

God knows you. This psalm speaks of God's intimate knowledge of God's children. God knows everything about us. At first that may seem unsettling; but this full knowledge results from God's love, even God's fascination with God's children. When members join the church we always ask, "Do you acknowledge yourself as a child of God, a recipient of God's love." The answer is always, "Yes."

# SERMON NOTES



## VILLAGE REMEMBERS

From the Village Heritage Committee: For over 40 years Village Church Mission Sewing groups have used their gifts of stitching and sewing to share the good news of Jesus' love with thousands. Shirley Meneilly, wife of our founding pastor Dr. Bob Meneilly, was instrumental in forming and sustaining this group. Photographs and examples of their ministry are currently on display in the Heritage cabinet located outside Friendship Hall near the south stairs. Stop by and give thanks to God for their faithfulness and creativity!

## TODAY AT VILLAGE

**WELCOME TO VILLAGE CHURCH!** Please join us every week. Refreshments are available in Friendship Hall following the worship service.

**WORSHIP BAGS** are available for children to use as tools in worship. Please return the bags to the baskets located in the Narthex at the end of the worship service.

**THE FLOWERS IN THE CHANCEL TODAY** are given to the Glory of God in loving memory of Antoni 'Toni' Diehl by Sybil Diehl and family.

**TE DEUM CHAMBER CHOIR CONCERT TODAY** - Te Deum Chamber Choir presents "Audacity," an exploration of hope, defiance, scriptures and love. Matthew Christopher Shepard will conduct the concert at 3 p.m. today in the Village Sanctuary. A \$15 donation is suggested. Te Deum is a member of the Village Church Arts Alliance. Visit [te-deum.org](http://te-deum.org) to learn more.

**WHAT ARE YOU DOING TONIGHT?** Join us at 6:30 p.m. tonight for the Taizé worship service at the Village Church Child and Family Development Center, 9900 Mission Road, Overland Park. Come and calmly prepare for the week ahead – this service has beautiful music, prayer, contemplative silence and communion.

## CHILDREN AND FAMILY MINISTRY

**PRESCHOOL CHURCH SCHOOL** – Parents may check in their preschool-age child on the first floor in the Preschool wing. Church school classes are available at 9:30 and 11 a.m.

**KIDS' KINGDOM – K–1st GRADE** new curriculum! Kindergarten meets in Room 311. First Grade meets in Room 303. 9:30-10:30 a.m. **2nd–5th GRADES** – Sign-in elementary (2nd-5th) aged students on the 3rd floor. Check the large bulletin boards located in the Children and Family wing for each grade's class location. 9:30-10:30 a.m. **CONNECT WITH 6TH GRADE** – Relevant discussions for today's 'tweens. Room 302. 9:30-10:30 a.m.

**VILLAGE CHURCH WEEKDAY PRESCHOOL** – Preschool Director Terri Gaeddert will host a "Preschool Information Coffee" for those considering enrollment in the 2017-18 school year at 10 a.m. Tuesday, Nov. 29, in Room 132. Join in to learn more about our program and the HighScope Curriculum. For child care reservations, please email [pam@villagepres.org](mailto:pam@villagepres.org) by Nov. 22.

## ADULT EDUCATIONAL MINISTRY

### Upcoming Village U classes:

**WHERE HAVE ALL THE YOUNG ADULTS GONE?** - This class will explore some of the latest research that tells us more about who the young adults are who have left the church, and why so few of them believe they can find a meaningful faith in the church as it exists. Dr. Rodger Nishioka and Rev. Hallie Hottle, instructors. 6:30-8 p.m. Wednesdays, Nov. 16 & 30. Room 127.

**INTERMEDIATE EXCEL CLASS** - This two week class is recommended for people who have a basic understanding of Excel OR have taken the Beginner Excel Class. Students will be using spreadsheets during class to reinforce learning. 6:30-8 p.m. on Wednesday, Nov. 16 and Nov. 30 in Room 316. Contact Marianne Weber at [Marianne.weber@villagepres.org](mailto:Marianne.weber@villagepres.org).

**ART IN THE "CHURCH ATTIC" – GIVING THANKS THEME** - Miss Carol, the beloved owner of "Art in the Attic," is bringing her love of art and kids to Village Church. This class is for children three years and older who must be accompanied by a parent, caregiver or grandparent. The kids will be creating a project with a "Giving Thanks" theme. Cost: \$7 per child. Class limit: 12 children. 9:30-11:30 a.m. Tuesday, Nov. 15. Room 203.

**HOLIDAY CENTERPIECES** - Join special event florist Katherine Taylor and learn how to create a low-profile holiday centerpiece for you to bring home to your table. The cost includes all materials and supplies. Cost: \$35 per person. 9:30-11:30 a.m. Friday, Nov. 18. Rooms 232 & 233.



**THE KINGS VS. THE SHEPHERDS** - The gospels of Matthew and Luke tell different stories about the birth of Jesus. The wise men only appear in Matthew and the shepherds only appear in Luke. Why is that? In these three sessions, Dr. Rodger Nishioka will examine both the familiar and perhaps the unfamiliar components of these two stories comparing and contrasting them with one another. 6:30-8 p.m. Wednesdays, Dec. 7-21. Room 127.

### **ADULT SUNDAY MORNING CLASSES - 9:30 A.M.**

**GROWING TOGETHER** - If you want to grow alongside others, drop in on this class. You'll find a welcoming group, a curious spirit, and an entertaining hour of fellowship and exploration. We're walking through a recently released movie which is a word-for-word version of the *Gospel of Luke*. We spend 10 minutes each week with the movie followed by a class discussion of how it applies to our lives. Room 132.

**VILLAGE FORUM** - Words of faith and scripture have significance beyond their dictionary definition. Join Dr. John P. Borden today and Nov. 20 in a discussion of "Words of Faith and Scripture" and how their meaning and significance is shaped by the various lens of beliefs, world-views, theologies and cultures. Beginning on Nov. 27, Dr. Rodger Nishioka will teach an Advent series that will conclude on Dec. 18. Rooms 126 & 127.

## CONNECTIONAL MINISTRIES

**THANKSGIVING POTLUCK WEDNESDAY, NOV. 16** – Please make your reservation for our Thanksgiving Potluck by today. Village will provide the turkey, gravy, mashed potatoes, sweet potatoes, stuffing, rolls and butter. Each household is asked to bring a hearty side dish (vegetable preferred) enough to share with eight people. If you do not bring a side dish, cost per adult is \$7 for the full buffet, \$6 for salad bar and dessert. \$3-children ages 3-10. Children under 3 are free. Make your reservation today by calling 913-671-2359 or emailing [liz.middleton@villagepres.org](mailto:liz.middleton@villagepres.org) or online at [villagepres.org/wednesday-dinners](http://villagepres.org/wednesday-dinners).

## MISSION

**THE FOOD PANTRY** – Today is the last collection day for the food items for the 500 Thanksgiving Baskets that will be distributed to the clients of the Food Pantry. If you weren't able to shop, you can do your part with a \$25 donation to feed a family of two, or a \$40 donation to feed a family of four. Cash or checks welcome. In December, canned meals (spaghettios, chili, ravioli, canned chicken or salmon, etc.) are the requested donations.

**DRMP NEEDS YOU** - Want to answer Jesus' call to love our neighbors? Want to use your skills to positively impact the lives of impoverished families in the Dominican Republic? Come see how you can participate with Village's DRMP, even if you aren't a medical professional or can't travel abroad. Check out information tables in Friendship Hall today and Nov. 20, and join us at 6 p.m. on Nov. 20 after The Gathering to learn more.

**STAR FAMILIES** - Village Church Christmas "Star Families" will be available for adoption in Friendship Hall from 9 a.m.-noon today. Return unwrapped gifts to the Operation Breakthrough truck 9 a.m.-noon on Sunday, Dec. 11. Each child receives three new unwrapped gifts, and the parent receives a \$25 gift card to either Target or Walmart. Monetary donations to Village Church will be accepted for Star Family holiday meals now through Dec. 11. Please note "Operation Breakthrough" in the memo of your check. Contact Marilyn Borel at [rmborel@sbcglobal.com](mailto:rmborel@sbcglobal.com) or 913-708-1917 for more information.

## PASTORAL CARE AND COUNSELING

**REMEMBRANCE SERVICE** – The Remembrance service honors our loved ones who are deeply missed. Join us at 6:30 p.m. on Sunday, Dec. 4, in the Sanctuary. The service includes prayers, music, reflection, candle lighting and the proclamation of God's holy promise: there's a light in this world that the darkness will never overcome. If your loved one passed away during 2016 and Village Church was informed, his or her name will be included in the program. If you would like to include any other names, contact Linda Alley at 913-671-2367 or [linda.alley@villagepres.org](mailto:linda.alley@villagepres.org) by noon Monday, Nov. 21.

**FAMILIES FOR MENTAL HEALTH MEETS NOV. 17** - The last meeting for the year is at 7 p.m. on Thursday, Nov. 17 in Rooms 126/127. Our speaker is Tim DeWeese. Everyone is welcome and all conversations are confidential.

## PRESBYTERIAN WOMEN

**WOW LUNCH AT YA YA'S** - Women of Wisdom, (WOW), welcomes all ladies to a noon lunch on Wednesday, Nov. 16, at Ya Ya's Euro Bistro in Corbin Park, at 135th and Metcalf. We will enjoy sophisticated dining in our private room and an eclectic menu of American, French, Italian and Greek cuisine. RSVP by tomorrow, Nov. 14, to Marvie Sneegas, sneegi@kc.rr.com, 913-209-9608.

**MISSION SEWING** All Christmas caps need to be turned in by Nov. 22, as we will be closed the month of December. Call Edie Hultman at 913-432-3515 for more information.

**ADVENT CANDLELIGHT DINNER RESERVATIONS OPEN TODAY** - Presbyterian Women invite you to celebrate Advent, this holy season rich with hope and wonder, at the intergenerational PW Candlelight Advent Dinner on Tuesday evening, Dec. 6. Rev. Hallie Hottle will give the meditation on "Seeking the Sacred." Reservations (\$16/person) will be sold beginning at 9 a.m. today in Friendship Hall or online at [villagepres.org](http://villagepres.org). Plan to get your reservations early, seating is limited! Child care is available with advance reservation. Questions? Contact Sarah McKee at 913-439-0035 or [sarahmckee810@yahoo.com](mailto:sarahmckee810@yahoo.com).

## YOUNG ADULT MINISTRY

**BIER AND BIBLE** - Every Thursday night, 7 p.m., KC Bier Co. Every week this fall we'll learn to read the Bible together, while continuing to grow in all that it means to be community. All 20s and 30s welcome.

**MORNING PRAYER AND BIBLE FOR MOMS!** 9:30 a.m. Wednesday mornings, in the Village Church Chapel. We'll pray for each other, then learn a little about the Bible together. How do you teach this book to kids, when we know we don't know enough about it ourselves? Let's learn together. All 20s and 30s moms welcome.

**THANKSGIVING POTLUCK** - Next Sunday, Nov. 20, after The Gathering. Bring your favorite food to share to the Small Dining Room (Room 230) for a meal together before the holiday!

## YOUTH MINISTRY

**HIGH SCHOOL AND MIDDLE SCHOOL SUNDAY SCHOOL CLASSES** - Will meet at 9:30 a.m. in the Youth Loft Room 333/332.

**CHEER** - High school youth group tonight from 6:30-8:30 p.m. All are welcome for a night of discussion, amazing people and a great time!

**GPS** - Middle school youth group, meets Wednesdays from 6:30-8 p.m. Join us for a great night of people, games and conversation. We hope to see you there!

**TWOSDAYS** - All 7th and 8th graders are invited to join us from 4-5:30 p.m. on Tuesday afternoons in the Youth Loft for fun and food!

### Gifts of Stock and Securities

At year end, many of you make a gift to Village Church through a transfer of stocks and securities. It is very helpful to know about stock transfers in advance, and to know how to credit the gift. We have an account set up to receive these transfers. For this information and to share with us your plan to transfer stock, please give Molly Sirridge, 913-671-2325, or Kathy Lueckert, 913-671-2365 a call.



## UPCOMING VILLAGE CHURCH ADVENT ACTIVITIES

### **ADVENT FAMILY WORKSHOP - 3-5 p.m. Sunday, Nov. 27, in Friendship Hall**

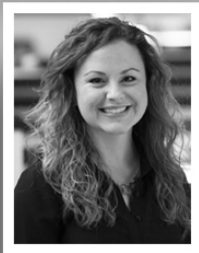
Don't miss our traditional family activity. Make your own Advent Wreaths and gifts for Christmas. There will be crafts for all age levels and of course cookie decorating, popcorn and festive music. Free and open to the community. Everyone is welcome to join us for The Gathering at 5 p.m. in the Sanctuary.

### **CHRISTMAS NIGHT OUT - 5:30-8:30 p.m. Friday, Dec. 2, Village Church Child Care**

Send your kids to this fun-filled night from 5:30-8:30 p.m. while you enjoy a night out. Children ages 2-8 will enjoy activities and games and cookies to decorate. Cost is \$15 per child with a \$30 maximum per family. Registration deadline is this Friday, Nov. 18. Sign up by calling 913-671-2352 or [pam@villagepres.org](mailto:pam@villagepres.org).

Presbyterian Women's 2016  
Advent Candlelight Dinner

*"Seeking the Sacred"*



6 p.m. Tuesday, Dec. 6

Guest Speaker:  
Rev. Hallie Hottle

Reservations open Nov. 13



# SERMON SERIES

## God's Beloved World - It is Beautiful, but Broken

This is God's world. But the ways of this world are not as God intends. Anyone can see that and many complain about the way things are; but faith invites us to hold a new perspective. Even when broken, the world is beautiful. It's not just the color of nature or the sounds that fill the air; it is the beauty of human compassion, genuine friendship, and humble service. The broken world is still beautiful. And this world is loved by God, so it should be loved by us. Such love is the currency of Christian living.

Oct. 30	God's Beloved World
Nov. 6	Do You See It?
<b>Nov. 13</b>	<b>Blessed are Those who Mourn</b>
Nov. 20	It is Worth the Struggle

---

## MINISTERS

All members of the congregation

## MINISTRY TEAM

Rev. Thomas L. Are, Jr., senior pastor ❖ Dr. Elisa Bickers, principal organist ❖ Rev. Len Carrell, pastor of pastoral care  
Cheryl Couch-Thomas, director of children and family ministry ❖ Rev. Hallie Hottle, pastor of young adult ministry  
Marjean Lindquist, director of child care ❖ Kathy Lueckert, director of finance and administration  
Ryan Main, interim director of music ❖ Rev. Jenny McDevitt, pastor of pastoral care  
Dr. Rodger Nishioka, director of adult educational ministry ❖ Matthew C. Shepard, associate director of music  
Molly Sirridge, director of stewardship & endowments ❖ Rev. Zach Walker, pastor of youth ministries  
Deborah White, director of mission ❖ Cindy A. Wilcox, director of connectional ministries  
Rev. Dr. Robert H. Meneilly, pastor emeritus

---

*Streaming video of all the Sunday morning Sanctuary services is available at [villagepres.org](http://villagepres.org).*

*Click the home page link "Live Sermon and Sermon Archives."*

*The 8 a.m. Sanctuary worship service is broadcast live on 1660 AM KMBZ, The Business Channel.*

*We kindly request that cell phones be turned off during worship.*

*Large-print Bibles and hymnals are available for worship. Ask an usher if you need these items.*

*Please note that additional parking is available across Mission Road in the Prairie School parking lots.*

*If you are not taking your bulletin with you, please hand it to an usher so it may be recycled.*