



---

## SERVICE OF WORSHIP

March 17, 2019 • 8, 9:30 and 11 a.m.

### ABOUT TODAY'S SERVICE

In these weeks that lead us, once again, to the celebration of the resurrection of Jesus Christ, we will reflect on who we are called to be as we take our own journey toward the fullness of resurrection. "Who we are called to be" is the point of this sermon series. Physical growth happens naturally. Spiritual growth requires discipline, intention and choice. Character begins by remembering what is important and what is not.

# GOD'S PEOPLE GATHER

Prelude

*Morgenstimmung (Morning Mood)*  
by Edvard Grieg

Words of Welcome

Rev. Tom Are, Jr.

Call to Worship

Rev. Len Carrell

The promise of our baptism is that we belong to You:

**We come as Your children, beloved and called by name.**

The promise of our baptism is that You cleanse us from all unrighteousness:

**Without Your grace, we could not stand.**

The promise of our baptism is that we are clothed in Christ:

**It is no longer we who live, but Christ who lives in us.**

**This is our story, this is our faith, and this is our hope.**

\*Hymn, No. 480 (v.1 - Soloist, v. 2 - Choir, v. 3-4 Congregation)

*Take Me to the Water*  
TAKE ME TO THE WATER

\*Prayer of Confession

**God of grace,**

**We have endeavored to live in a virtuous manner this week**

**and to turn from sin.**

**In some ways we have done just that.**

**But our virtue, no doubt, appears more righteous to us than to others.**

**Standing in Your presence,**

**we are slow to confess our sin,**

**but, even more, we are embarrassed to speak to You of our virtue.**

**This alone is reason to ask for Your forgiveness.** (Silent prayer)

Lord, \_\_\_\_\_ have mer - cy. Christ, \_\_\_\_\_ have  
mer - cy. Lord, \_\_\_\_\_ have mer - cy. \_\_\_\_\_

\*Assurance of God's Grace

\*Response

Glo-ry to our cre - a - tor, and to the Son, and to the Ho-ly  
Spir - it: as it was in the be - gin-ning,  
is now, and will be for e - ver.  
A - men, A - men. A - men.

\*Passing of the Peace

# PROCLAMATION OF THE WORD

Call to Prayer (Congregation sings refrain before and after weekly sung choir prayer) (8 a.m.)

There is a long-ing in our hearts, O Lord, for  
you to re - veal your - self to us.  
There is a long-ing in our hearts for love we  
on - ly find in you, our God. (hold last time) Fine

Prayers of the People and the Lord's Prayer (8 a.m.)

**Our Father, who art in heaven, hallowed be thy name.**

**Thy kingdom come, thy will be done, on earth as it is in heaven.**

**Give us this day our daily bread;**

**and forgive us our debts, as we forgive our debtors;**

**and lead us not into temptation, but deliver us from evil.**

**For thine is the kingdom and the power and the glory, forever. Amen.**

Time with Children (9:30, 11 a.m.)

The Sacrament of Baptism (9:30, 11 a.m.)

Hymn, No. 482

*Baptized in Water*

**Baptized in water, sealed by the Spirit, Marked with the sign of Christ, our King;**

**Born of the Spirit, we are God's children, Joyfully now God's praises we sing.**

Prayer for Illumination

Elder Ted Higgins (8 a.m.)  
Elder Elizabeth Zakaryan (9:30 a.m.)  
Elder Charlotte Davis (11 a.m.)

Scripture Reading

Matthew 5:21-26 (pg. 880)

Sermon

*Character: The Most Important Thing*

Rev. Tom Are, Jr.

## RESPONSE TO THE WORD

\*Hymn, No. 754

*Help Us Accept Each Other*  
BARONITA

Offertory

*Be Thou My Vision*  
arr. Alice Parker; Village Choir

\*Response

**Praise God, from whom all blessings flow;  
Praise Christ, all people here below;  
Praise Holy Spirit evermore;  
Praise Triune God, whom we adore. Amen**

\*Prayer of Dedication

\*Hymn, No. 817

*We Walk by Faith and Not by Sight*  
DUNLAP'S CREEK

Congregational Meeting (9:30 a.m.)

\*Benediction

\*Benediction Response

*Amen*  
Traditional Danish

\*Postlude

*KINGSFOLD*  
by David P. Dahl

*\*All who are able may stand*

© A-705103 for all hymns

### Discover Village Information Center

A place for you to connect and ask questions. You're invited to stop by our Discover Village desk, between worship services, at the north Welcome Center entrance. Hosts will be available at the desk every Sunday morning; a place where you can share conversation and enjoy a cookie. We look forward to meeting you!



## THE CHURCH'S BOOK (Week of March 18, 2019)

The following daily Bible readings were written by Rev. Dr. Brandon Frick and are offered for your own personal devotion. The lectionary readings for the first Sunday in Lent all revolve around the "wilderness." So grab your boots and a hat; we're going on a hike.

### **Monday, March 18**

**Luke 4:1-13**

Jesus' 40 days in the wilderness are the basis for our Lenten 40 days. Matthew, Mark, and Luke all tell us this incredible story of Jesus and the devil, and some translations say that Jesus was "tempted," while others use the word "tested," to describe what the devil is trying to do to him. Having read this passage, do you think this is a temptation, a test, both, or neither for Jesus?

### **Tuesday, March 19**

**Genesis 21:8-20**

Though Sarah and Abraham eventually conceived Isaac, Abraham had earlier conceived Ishmael with her handmaiden, Hagar. Hagar and Ishmael are eventually sent away into the wilderness, which was a harsh and unforgiving land. Just when Hagar is certain they will die, an angel visits them. What good news does the angel bring? Would you describe their time in the wilderness as a good thing? Why or why not?

### **Wednesday, March 20**

**Exodus 3:1-12**

The wilderness can also be a place where people encounter God in powerful ways, as Moses discovered while minding his sheep. Take some time to imagine this scene. What must Moses have thought and felt? In verse twelve, God tells Moses that the Hebrew people should be brought where? What's the significance of that destination?

### **Thursday, March 21**

**Exodus 14:9-12**

The wilderness can also be a foreboding place. What do you think those questioning Moses were afraid of in the wilderness? What wildernesses terrify you? They may be places, people, etc., but scares you so bad that it makes you doubt God's provision?

### **Friday, March 22**

**Exodus 17:1-7**

God's provision can be encountered in strange ways in the desert. When you've been in the wilderness, i.e., a time of testing or temptation, how has God provided for you? Has it ever been like the water from the rock, a source of life that comes out of something that is not alive?

### **Saturday, March 23**

**1 Kings 19:1-15**

The prophet Elijah is chased out into the wilderness by corrupt rulers, and his situation leads him to despair? What are some of the ways he describes his plight?

### **Sunday, March 24**

**Isaiah 40**

How does God's promised day transform the wilderness, and the whole world with it? What words or images in this chapter bring you comfort or challenge you?

**SIGN UP TO RECEIVE DAILY BIBLE READINGS EMAILS**

**Subscribe now at [www.villagepres.org/subscribe](http://www.villagepres.org/subscribe). Emails arrive first thing in the morning  
Monday through Saturday.**

## SUMMER CAMPS REGISTRATION

**8 a.m.- noon March 18**

Church members, current  
Preschool, KDO and  
VCCFDC families

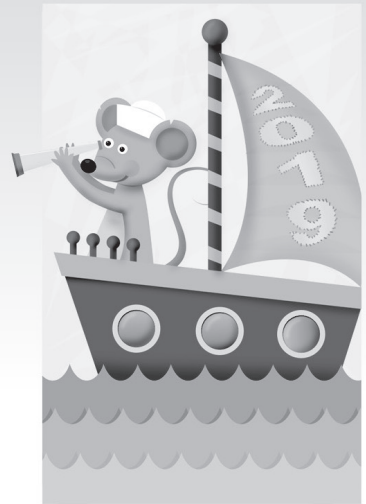
**8 a.m.- noon March 25**

Community members

More info at  
[villagepres.org/summercamp2019](http://villagepres.org/summercamp2019)

# SAILING INTO SUMMER

at  
Village Church



# IN PARADISUM

Fauré Requiem and Poulenc Organ Concerto

3 p.m. Sunday, April 7

Village Church on Mission

Featuring the Village Chamber Choir and Orchestra and  
organist Dr. Elisa Bickers

Free admission

## TODAY AT VILLAGE

**WELCOME TO VILLAGE CHURCH!** Please join us every week. Refreshments are available in Friendship Hall following the worship service.

**THE FLOWERS IN THE CHANCEL TODAY** are given to the Glory of God in loving memory of Martha Coate by Art's Coffee Group.

**CELEBRATING THE SACRAMENT OF BAPTISM TODAY** – Please welcome these newest members into our faith community as we celebrate the baptisms of the following children at **9:30 a.m.**: Hampton Reid Hannawald (Derek and Cara Hannawald, parents); Madeline Kathleen Hannawald (Lauren and Jeff Hannawald, parents); Everett Woods Langdon (Laura Beachy Langdon and Jesse Langdon, parents); and Bennett Matthew Wopata (Emily and Matt Wopata, parents). **11 a.m.**: Bradley Lynn Allen (Madeline and Andrew Allen, parents); Louis Byron Crowder (Lauren and Taylor Crowder, parents); and Leo Robert Miles (Leah and Geoff Miles, parents).

**REV. LEN CARRELL FAREWELL RECEPTION TODAY** – Rev. Len Carrell has accepted a new call to be the pastor and head of staff at First Presbyterian Church in Columbia, Tennessee. Please join us as we wish him well at his Farewell Reception following the 11 a.m. worship service today in Friendship Hall.

**CELEBRATION OF FAITHFUL WOMEN** – Today is the deadline to make reservations for the the Celebration of Faithful Women brunch on Saturday, March 23, in Friendship Hall. This year, we will celebrate together in honoring Ann Colston, Susie Dixon, and Lucy Tidwell. Rev. Jessie Light-Wells be the keynote speaker. Make your reservation online at [www.villagepres.org/pw](http://www.villagepres.org/pw). Contact Kenyon Vrooman at [Kenyon.vrooman@villagepres.org](mailto:Kenyon.vrooman@villagepres.org) for more information.

**NEW TO US?** Village Presbyterian Church is a family of faith actively shaped by the life of Christ to love one another, providing leadership for the transformation of our communities and serving the world. We are a Presbyterian (USA) family of faith that is inclusive, generous and welcoming of all people. Village is one church worshipping at two campuses: Village on Mission (6641 Mission Road in Prairie Village) and Village on Antioch (14895 Antioch Road in Overland Park). If you would like a tour of Village on Mission, contact Cindy Wilcox at [cindy.wilcox@villagepres.org](mailto:cindy.wilcox@villagepres.org) or 913-671-2331.

**JOINING VILLAGE CHURCH** – Village welcomes new members every other month at a special Sunday luncheon. Join us April 7, June 2, Aug. 4, Sept. 29 and Dec. 8. Contact [cindy.wilcox@villagepres.org](mailto:cindy.wilcox@villagepres.org) for info.

**WORSHIP BAGS** are available for children to enjoy during worship. Please return the bags to the baskets located in the Narthex at the end of the worship service.

## ADULT EDUCATIONAL MINISTRY

**OPTIONS FOR HOUSING AS YOU AGE** – Live as independently as possible as you age. This seminar focuses on local housing options and costs, practical considerations, including what to look for and when; how planning can translate into a better quality of life. 9 a.m.–noon. Saturday, March 30, east side of Friendship Hall, Room 228. Register to [sunni.battin@villagepres.org](mailto:sunni.battin@villagepres.org). Include your name and email address and put "Housing Seminar" in the subject line.

**ADULT EDUCATIONAL MINISTRIES IS PLANNING FOR FALL VILLAGE U** – Whether you have taught previously or are new to Village U, we would like to hear from you. If you have a great idea for a course, contact Sunni Battin at [sunni.battin@villagepres.org](mailto:sunni.battin@villagepres.org).

**To register for Village U classes, visit [villagepres.org/village-u-community-classes](http://villagepres.org/village-u-community-classes):**

**MEN'S BREAKFAST AND BIBLE WITH REV. TOM ARE** – Join Rev. Tom Are for a morning Bible study and hot breakfast. Invite a friend and join the fellowship. To make a reservation for breakfast, please register online. Cost: \$6. Child care is not available. 7:30-8:30 a.m. Tuesdays, March 19 & 26. Room 228.



**DAY TRIP: KAUFFMAN CENTER FOR THE PERFORMING ARTS** – Honored as one of the world's 15 most beautiful concert halls, the Kauffman Center attracts some of the world's most renowned performers and entertainers. Please join us for a tour, some great company, and lunch at the Webster House (cost does not include lunch). 9:30 a.m.-2 p.m. Thursday, April 11. Cost :\$30 per person. Please meet promptly on the south side of the Mission Campus at 9:30 a.m.

**9:30 a.m. Adult Sunday classes include:**

**FAITH JOURNEY** – We are studying, "Mending the Divide–Creative Love in a Conflicted World" by Jon Huckins/Jer Swigart. The authors invite us to explore God's vision for peacemaking in our world and what our part can be in bringing that vision to life. Facilitated by Kathy Ray. Room 230.

**FOUNDATIONS OF FAITH** – For March 24 and 31, the focus of the class will be on the Jodi Magness series on Jesus' Jewish roots on his "off" Sundays. Facilitated by Diann Markley. Room 15.

**GROWING TOGETHER** – Each week, we are growing together in faith by digging into the stories behind the Apostle Paul's letters. You are invited to drop in for a mixture of video content and group discussion as we bring alive the stories of the New Testament. Facilitated by Lawrence Andre. Room 124.

**VILLAGE FORUM** – We are currently discussing Father Richard Rohr's video series, "Embracing and Alternative Orthodoxy: Richard Rohr on the Legacy of St. Francis." The short videos have sessions on Atonement Theology, Eco-Spirituality, The Cosmic Christ, Orthodoxy vs. Orthodoxy, and Mysticism over Moralism. Facilitated by Gus Breyspraak. Rooms 126 and 127.

## CHILDREN AND FAMILY MINISTRY

**ALL SERVICES–CHILD CARE** – Infants to 4-year-olds are welcome in Rooms 114, 111 and/or 107.

**FAMILY WORSHIP SUNDAY TODAY** – Children are invited to worship with their families in the Sanctuary.

**MORNING STARS** – 3-year-olds through 6th graders are welcome to join and sing. We meet from 10:30-11 a.m. Angel Choir (3 to 4-year-olds) meet in Room 203; Prelude Choir (K-2nd grade) meet in Room 201; Hallelujah Choir (3rd-6th grade) meet in Room 204. Pick up for all children is on the 2nd floor.

**SUMMER CAMPS SIGN UP** – Registration for KDO, Creations by Kids summer camps, and Music and Drama Camp begins for Village Church members and current KDO, Preschool and Day Care families tomorrow, March 18. Visit [villagepres.org/summercamp2019](http://villagepres.org/summercamp2019) for registration information and forms.

**KIDS DAY OUT** – We still have some openings for Village Kids Day Out program for children ages 2-3 yrs. on Thursdays from 9:30 a.m.-2:30 p.m. Our program runs from Sept. 5, 2019 through May 14, 2020. Your child will be cared for in a safe, nurturing and fun environment. Enrollment for the spring '19 semester has begun. Tuition is \$125 a month plus a one-time registration fee of \$50. Call Marjean at 913-671-2322 for more information.

**BAPTISMS and NEW BABIES** – The next baptism dates are May 12 and July 21. An education class is offered for members who are new to Village baptism. Share news of your new baby so we can welcome and commemorate the new family member's arrival. Call 913-671-2350 or email [kate.ruecker@villagepres.org](mailto:kate.ruecker@villagepres.org).

## CONNECTIONAL MINISTRIES

**WEDNESDAY NIGHT DINNER** – Our menu for March 20 is corned beef & cabbage, buttered new potatoes, baby carrots, vegetarian entree. The salad bar opens at 5:15 p.m.; hot food buffet is open 5:30-6:30 p.m. Full meal with salad bar and dessert is \$7. Salad bar and dessert is \$6. Children ages 4-10 are \$3 and children age 3 and under are no charge. Call Liz Middleton 913-671-2359 or email [liz.middleton@villagepres.org](mailto:liz.middleton@villagepres.org) to make your reservations by noon tomorrow.

## MISSION

**THE FOOD PANTRY** – The Food Pantry thanks you for your continuing donations of toothpaste, toothbrushes and shampoo during March. These basic personal toiletry items are frequently requested by the clients. Raincoats, umbrellas and light jackets are scarce in the Clothes Closet. Please check your closets to see if you have some that you are no longer using and might donate to the clients. Thank you.

**POETRY READING** – The Johnson County Library at 9875 W. 87 Street is hosting a free poetry reading by former inmates of the Lansing Correctional Facility entitled “Open to the Sky” at 6:30 p.m. Tuesday, March 19. The program is conducted under the auspices of the Arts in Prison program, a ministry supported by Village Church. Many of the former inmates were taught by Village member Arlin Buyert. Contact Arlin at 913-909-2915 for more information.

## MUSIC MINISTRY

**UMKC CHOIRS & ORCHESTRA IN CONCERT** – 7:30 p.m. Tuesday, March 19, in the Village on Mission Sanctuary. This select chamber ensemble is dedicated to performing music of the 16th-21st centuries at the highest possible artistic level. Admission is free.

**LIZ LONGLEY CONCERT AT VILLAGE ON MISSION** – 7-9 p.m. Thursday, March 21, in Friendship Hall. Her music has been featured on TV shows such as ABC’s “Beauty & The Beast” and Lifetime’s “Army Wives.” Admission is free. For more information and to RSVP, go to [VPCTheGathering.org/concert](http://VPCTheGathering.org/concert).

**KANSAS CITY WIND SYMPHONY CONCERT** – 7 p.m. on Sunday, March 24, in the Village Church on Mission Sanctuary. Admission is free. The program will feature two chamber works by Robert Spittal and Karel Husa, and a hymn inspired full ensemble pieces by Claude T. Smith, David Gillingham and David Maslanka.

**ORGANIST DEXTER KENNEDY** – 7:30 p.m. Tuesday, March 26, in Village on Mission Sanctuary. The concert is co-presented by Village Church and the KC Chapter of the American Guild of Organist (AGO). Admission is free.

## PASTORAL CARE AND COUNSELING

**EASTER LILIES NEED LEGS** – 250 Easter lilies will be taken to homebound members; will you deliver one or two? We’re trying a new delivery method– it will be like our poinsettia delivery process. Come to the Welcome Center between any of the Easter Sunday services to pick up an Easter lily (sorted by zip code areas). All but 96 Easter lilies can go anytime; those 96 need to be taken after the last service. Contact Linda Alley at 913-671-2327 or [linda.alley@villagepres.org](mailto:linda.alley@villagepres.org) for information.

## PRESBYTERIAN WOMEN

**WOMEN OF WISDOM (WOW) LUNCH** – WOW is delighted to invite all ladies to a noon lunch Tuesday, March 19. We’ll be dining in a private room at the new location of Plaza III Steakhouse, 12631 Metcalf. With the same great American food, lunch there will be fine dining in a stunning atmosphere. RSVP by tomorrow, March 18, to Marvie Sneegas, [sneegi@kc.rr.com](mailto:sneegi@kc.rr.com), 913-209-9608. Come and bring a friend.

**WOMEN WITH SPIRIT EVENT** – WWS Lost & Found Brunch with Rev. Dr. Rodger Nishioka from 9:30 a.m.-noon Tuesday, March 26, at Kenyon Vrooman’s house (9518 Chadwick Dr., Leawood). Please bring a dish to share. Email [shelbykrumm@yahoo.com](mailto:shelbykrumm@yahoo.com) to RSVP. Child care is available with an advance reservation.

**MISSION SEWING** – Mission Sewing is getting low on fabric. Fabric in one yard lengths in cotton and cotton blends suitable for children’s dresses, large adult dresses and various shapes and sizes of pillows. Items can be dropped off at the switchboard or brought to Room 115 from 8 a.m.-3 p.m. on any Tuesday. Call Edie Hultman at 913-432-3515 for more information.

## YOUNG ADULT MINISTRY

Young Adult Ministry is for all people in their 20’s and 30’s.

**THEOLOGY THURSDAYS** – No Theology Thursday this week. Join us for the Liz Longley concert in Friendship Hall at 7 p.m. March 21. More info at [VPCTheGathering.org/concert](http://VPCTheGathering.org/concert).

## YOUTH MINISTRY

**JOIN US FOR ANY OF OUR WEEKLY ACTIVITIES!** All are welcome regardless of previous Village attendance and no sign-up is required. Check [villagepresyouth.org](http://villagepresyouth.org) for more details.

**ALPHA & OMEGA** (middle and high school Sunday mornings) – 9:30 a.m. today, Youth Loft (Room 333).

**SNL** (high school youth group) – **No SNL tonight due to spring break – see you next week March 24!** 6:30-8:30 p.m. Sundays, in the Youth Loft (Room 333).

**LOFTERNOONS** (middle school after school program) – 4-5:30 p.m. Tuesdays, Youth Loft (Room 333).

**GPS** (middle school youth group) – 6:30-8 p.m. Wednesdays, in the Youth Loft (Room 333).

**EARLY TABLE** (morning devotional for high schoolers with food) – 7:30-8:15 a.m. Thursdays, at Zach's house (5401 W. 77th St., Prairie Village) And yes, we give you a ride to school afterward if you need it!

**SUMMER TRIPS REGISTRATION OPEN** – You can now register for all of our summer trips: San Francisco, a local KC trip, HS Montreat and the MS Float Trip! Just head to [villagepresyouth.org/forms](http://villagepresyouth.org/forms) or pick up a hard copy by the youth offices or in the Youth Loft.

### Easter Lily Memorial

You may purchase a potted lily in memory of a loved one by sending a check for \$10 payable to Village Church and including the memorial name. Send your check to the church ATTN: Janice Gill. The deadline to receive checks is Friday, April 12. The list of memorials/donors will be listed in the May 1 "Good News!"

### Traveling Exhibit "Come to the Table" On Display in the Welcome Center Now-April 21

This Christians in the Visual Arts (CIVA) traveling exhibit titled "Come to the Table" features 34 selected works in a variety of media, from historical pieces by Albrecht Durer, to modernist work by Jasper Johns and Sadao Watanabe, to fresh contemporary pieces created by CIVA artists. Collectively, according to the exhibition statement, the works celebrate "the Table: a place of invitation, relationship, abundance, generosity, and reconciliation, where communities gather and where worshipers encounter the grace of God."



### The Meneilly Society

When you remember Village Church Endowment Trust in your planned gifts, you become a member of the Meneilly Society and help ensure a bright future for Village Church. Through God's grace and your generosity, Village will be able to serve our members, our community and our world for generations to come.

Contact Molly Sirridge at 913-671-2325 or [molly.sirridge@villagepres.org](mailto:molly.sirridge@villagepres.org) for more information.



Village Presbyterian Church  
ENDOWMENT TRUST  
*Care • Dream • Participate*

# LENTEN SERMON SERIES

## Character is Always Chosen

March 17-April 21

In these weeks that lead us, once again, to the celebration of the resurrection of Jesus Christ, we will reflect on who we are called to be as we take our own journey toward the fullness of resurrection. "Who we are called to be" is the point of this sermon series. In his book, "The Road to Character," David Brooks says, "Most of us have clearer strategies for how to achieve career success than we do for how to develop a profound character." There is wisdom in Brook's remarks, as character is not something that just happens; character is always chosen. Physical growth happens naturally. Spiritual growth requires discipline, intention and choice. We will reflect on some of the strategies for choosing character in this sermon series.

|                 |   |
|-----------------|---|
| <b>March 17</b> | <b>Character: The Most Important Thing</b>                |
| March 24        | Choices...not Evolution                                   |
| March 31        | Character Requires Courage                                |
| April 7         | Character Requires Hope                                   |
| April 14        | Palm Sunday: Humility May be Out of Style, but Not for Us |
| April 21        | Easter: The Possibility of Getting it Right               |

---

## MINISTERS

All members of the congregation

## MINISTRY TEAM

Rev. Tom Are, Jr., senior pastor ❖ Dr. Elisa Bickers, principal organist

Will Breytspraak, director of music ❖ Rev. Len Carrell, pastor of pastoral care

Rev. Becky Chamberlain, interim pastor of pastoral care ❖ Rev. Dr. Brandon Frick, site pastor of Village on Antioch

Rev. Hallie Hottle, pastor of young adult ministry ❖ Marjean Lindquist, director of child care

Kathy Lueckert, director of finance and administration ❖ Rev. Dr. Rodger Nishioka, senior associate pastor

Matthew C. Shepard, associate director of music ❖ Molly Sirridge, director of stewardship and endowments

Rev. Zach Walker, pastor of youth ministries ❖ Deborah White, director of mission

Cindy A. Wilcox, director of connectional ministries ❖ Rev. Dr. Robert H. Meneilly, pastor emeritus

---

Large print bulletins are available in the Narthex. Ask an usher to bring you one.

*Streaming video of all the Sunday morning Sanctuary services is available at [villagepres.org](http://villagepres.org).*

*Click the home page link "Live Sermon and Sermon Archives."*

*The Sanctuary worship service is broadcast live at 8 a.m. on 1660 AM KMBZ, The Business Channel.*

*We kindly request that cell phones be turned off during worship.*

*Please note that additional parking is available across Mission Road in the Prairie School parking lots.*

*If you are not taking your bulletin with you, please hand it to an usher so it may be recycled.*