

# CARING FOR GOD'S GOOD GREEN EARTH

## Celebrating Earth Month and Beyond



### The Message...

*God spoke: "Let us make human beings in our image, make them reflecting our nature so they can be responsible for the fish of the sea and the birds in the air and the cattle, and yes, Earth itself, and every animal that moves on the face of the Earth."*  
*Genesis 1:28*

### The Challenge...

All life is interconnected. In the midst of the COVID-19 pandemic, we are called to care for one another and for the whole of God's beautiful creation. Climate change is dramatically affecting us all. From wildfires like those in California and Australia, to hurricanes and typhoons, to increasing floods and droughts, to melting glaciers and permafrost, to a warming ocean and rising sea levels, to more severe rain and snow storms, the whole of creation is suffering and at risk.

### The Opportunity...

Your individual actions to be responsible and care for God's creation make a difference. Each individual action has an impact and collectively we can help heal the planet. Celebrate the 52nd anniversary of Earth Day on April 22 and join Village Church's Environmental Action Committee by doing any or all of the following actions during Earth Month and beyond.

- \_\_\_ Eat less meat, especially beef and lamb. Eat lower on the food chain. Eat a plant-based diet. \*
- \_\_\_ Buy locally grown food, especially organic.
- \_\_\_ Eliminate food waste. Save and eat left-overs.
- \_\_\_ Compost for the Greener Good: food & other organic waste (back yard, curbside, or drop off):  
([www.compostcollectivekc.com](http://www.compostcollectivekc.com), [www.kccancompost.com](http://www.kccancompost.com), [www.foodcyclekc.com](http://www.foodcyclekc.com))
- \_\_\_ Reduce. Consume less.
- \_\_\_ Reuse and repurpose. Avoid single use items, especially plastic.
- \_\_\_ Recycle. Sort your trash. (paper, aluminum, metals, plastics, chipboard, & cardboard)
- \_\_\_ Replace incandescent bulbs with CFL or LED bulbs, preferably the latter (no mercury).
- \_\_\_ Make your next car a hybrid, a hybrid electric, or an all electric.
- \_\_\_ Plant a tree or two or three.
- \_\_\_ Rebuild and enrich topsoil.
- \_\_\_ Get political. Lobby. Write letters. Sign petitions. Vote Climate for our children.
- \_\_\_ Consume renewable energy (Evergy's renewable subscription program\*\* or Sol Systems\*\*\*).

\* Refer to **Environmental Impacts of Food and Agriculture** infographic on the next page (kg CO2 equivalents per kg).

\*\* <https://www.evergy.com/smart-energy/renewable-resources/subscription-programs>

\*\*\* <https://www.solsystems.com/> (888-235-15380) [Formerly Aradia Power]



# Environmental Impacts of Food and Agriculture

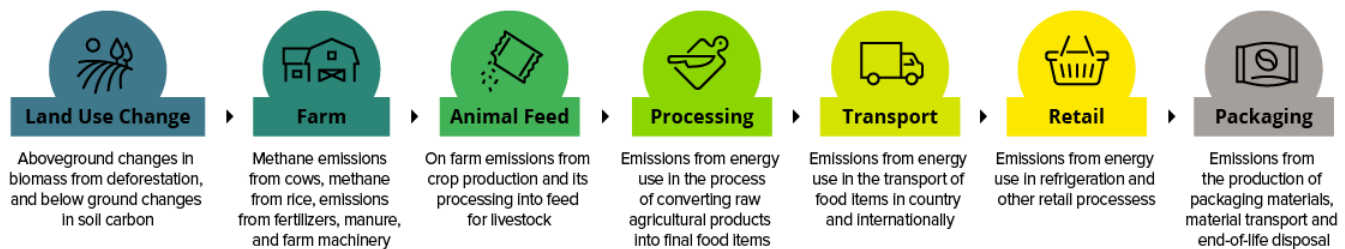
Food's GHG emissions come from land use change, farming, animal feed, processing, transportation, retail, and packaging. These emissions account for over a quarter (26%) of global GHG emissions that are contributing to climate change. The chart below summarizes the global impacts of several food choices expressed in **GHG Emissions per Kilogram of Food Product**. It is taken from a January 2020 report published by **Our World in Data** (Global Change Data Lab). Compare the following food choices:

Beef	60 kg CO2 equivalents per kg product
Lamb	24 kg CO2 equivalents per kg product
Pork	9 kg CO2 equivalents per kg product
Poultry	6 kg CO2 equivalents per kg product
Fish (farmed)	5 kg CO2 equivalents per kg product
Fish (wild catch)	3 kg CO2 equivalents per kg product

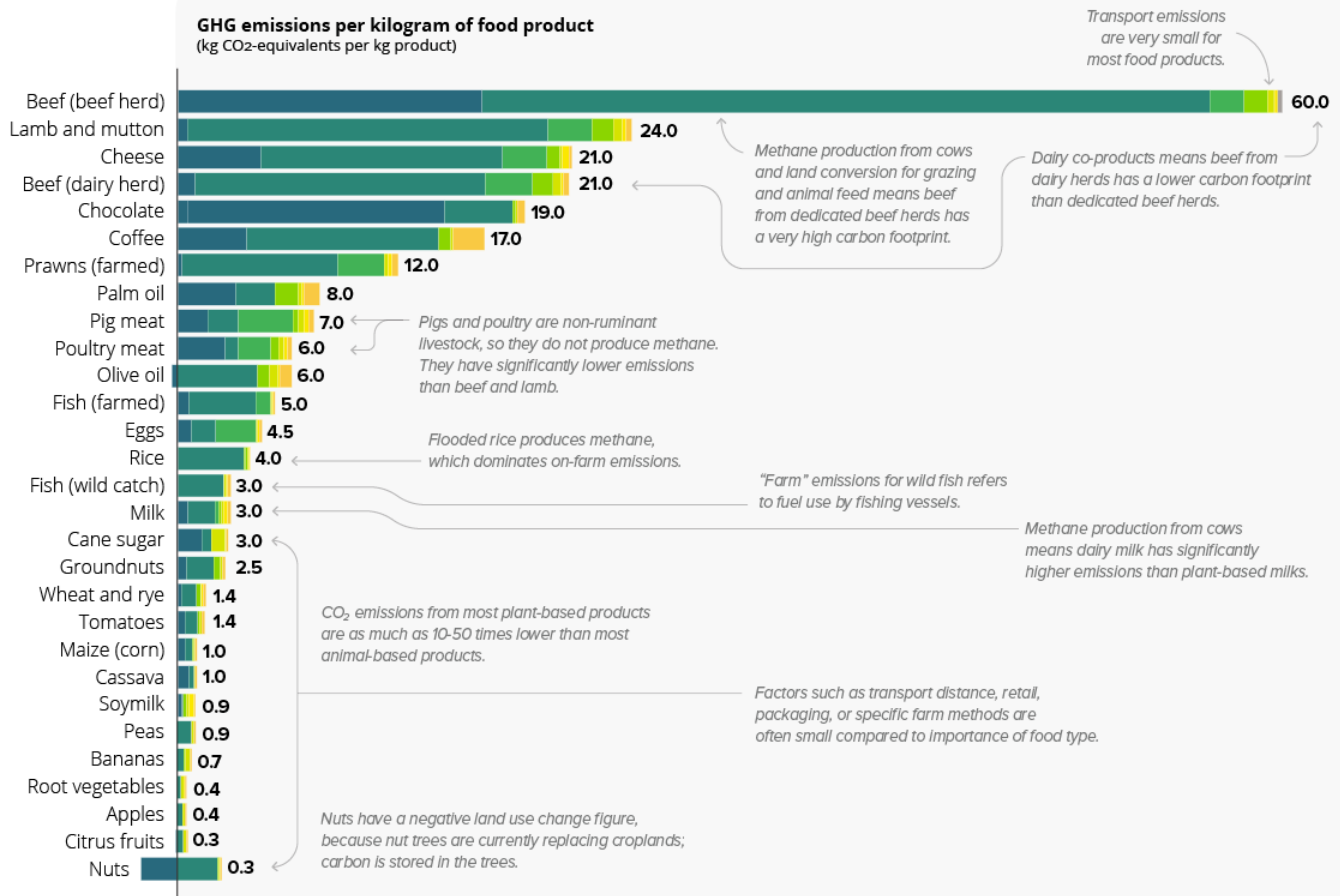
## FOOD / Greenhouse gas emissions across the supply chain

Original graphic by  
**Our World in Data**

There is a vast difference in greenhouse gases (GHG) that are produced across various food types.



**GHG emissions per kilogram of food product**  
(kg CO<sub>2</sub>-equivalents per kg product)



Note: Greenhouse gas emissions are given as global average values based on data across 38,700 commercially viable farms in 119 countries. Data source: Poore and Nemecek (2018). Reducing food's environmental impacts through producers and consumers. Science. Images sourced from the Noun Project. OurWorldInData.org - Research and data to make progress against the world's largest problems.

